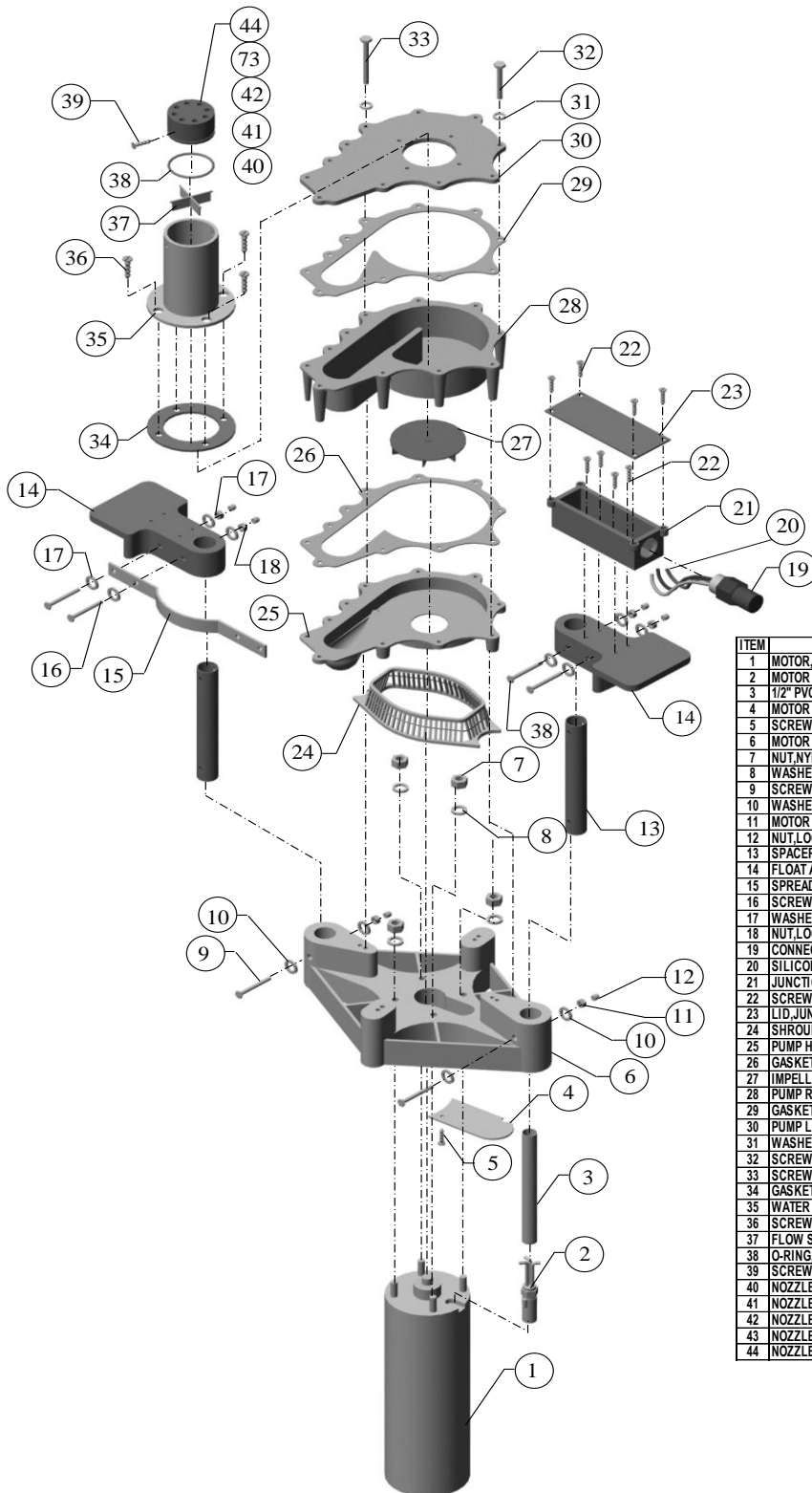


FONT'N-AIRE READY
 PROPELLER PUMP SUB ASSY.

2022

PART NO.	DESCRIPTION	PRICE
90DSA-FNASF	DRIVE STRUCTURE FNA ASSY. (ITEMS 2-23)	760.00
90NACARIMII	CARNIVAL NOZZLE ASSY. (ITEMS 26-33)	325.00
90MLA4SF	MOTOR LEAD ASSY, W/PVC & WIRE NUTS (600M) (ITEMS 2,3,20)	72.00
90MLA4	MOTOR LEAD ASSY, W/PVC & WIRE NUTS (STANDARD) (ITEMS 2,3,20)	72.00
90ELCI26140	EQUIPMENT LOSS INTERRUPTOR, 230V, 20 AMP	130.00
90TR221-3	TIME SWITCH 240V, NEMA 3R ENC,W/CORD CLAMPS	220.00
5828240850	CONTROL BOX, 1HP, 230V, 1PH	218.00
15MPA13X15	MOUNTING PLATE	105.00
90JBA3WFNAQ	JUNCTION BOX W/MALE BH, 3W W/GRND FOR FNA/AQ (ITEMS 19-23)	115.00
90MMFAIM	MOTOR MOUNT ASSEMBLY (ITEMS 4-12)	268.00
90FA40	FLOAT 40"	425.00
90DS40	DEBRIS SCREEN FOR 40" FLOAT	65.00
90PP1230R	PROPELLER PUMP ASSY, 1/230/1, REDUCED, 600M	2,521.00
90PP1230S	PROPELLER PUMP ASSY, 1/230/1, STANDARD, 600M	2,521.00
90PP102301	PROPELLER PUMP ASSY, 1/230/1, STANDARD MOTOR	2,302.00
***NOTE: ASSEMBLY INCLUDES MOTOR, DRIVE STRUCTURE, PUMP & NOZZLE OF YOUR CHOICE (ITEMS 1-44)		
	LESS, FLOAT, WIRE & CONTROLS	
90RECP1230	CONTROL PANEL, READY W/O ENCLOSURE	705.00
94ECP12301	ETL CONTROL PANEL W/ENCLOSURE	1,250.00

FONT'N-AIRE READY CENTRIFUGAL PUMP PARTS LIST



ITEM	PART DESCRIPTION	QTY	PART NUMBER
1	MOTOR, 1HP, 230V, 1PH, 600M	1	49214508061
2	MOTOR LEAD, 3W	1	58152735911
3	1/2" PVC TUBE	1	90PVC12
4	MOTOR LEAD COVER	1	15MLC-FNA
5	SCREW,#8 X 3/8"	4	183182837
6	MOTOR MOUNT, INJECTION MOLDE	4	04MMFAIM
7	NUT,NYLON LOCK,5/16-24	4	18078500
8	WASHER,FLAT,5/16"	4	18079025
9	SCREW,#10-24X2-1/2"	2	181024250
10	WASHER,#10 FLAT	4	18AN960C10L
11	MOTOR MOUNT SCREW CAP	2	15MMSC
12	NUT,LOCK,10-24	2	18071NM10
13	SPACER,9"	2	85SP9
14	FLOAT ARM BRACKET	2	22FABIM
15	SPREADER BAR	2	04SBFNAIM
16	SCREW,10-24X2-3/4",HHCS	4	181024275
17	WASHER,FLAT,10X3.4 OD	8	1813643404
18	NUT,LOCK,10-24	2	18071NM10
19	CONNECTOR,BH,MALE,3W	1	15CN-32681
20	SILICONE WIRE NUT,YELLOW	4	15CN-10444
21	JUNCTION BOX	1	15JIBM
22	SCREW,#8X3/8"	8	183182837
23	LID,JUNCTION BOX	1	15JBL-FNA
24	SHROUD,FNA-CP	1	70PCFNACP
25	PUMP HOUSING	1	64PH-PIMG
26	GASKET,PUMP HOUSING	1	64PHG2
27	IMPELLER,1-HP	1	70CPIM1
28	PUMP RETURN	1	64PR-PIMG
29	GASKET,PUMP RETURN	1	64PRG2
30	PUMP LID	1	64PRL-PIMG
31	WASHER,FLAT,1/4"	11	18079020
32	SCREW,1/4-20X2-3/4" W/NYLON	7	18101025275NP
33	SCREW,1/4-20X3-3/4" W/NYLON	4	18101025375NP
34	GASKET,FNA NOZZLE	1	64GFN
35	WATER PLENUM	1	64WPFCP
36	SCREW,1/4-20X1/2",NYLON	4	1830622550NP
37	FLOW STRAIGHTENER,CP	1	64FSCP
38	O-RING,#147	1	29OR147
39	SCREW,10-24X2-1/2"	2	1830621050
40	NOZZLE,NOVA,PVC	1	67MPVCNOV
41	NOZZLE,GALAXY,PVC	1	67MPVCGAL
42	NOZZLE,DIANA,PVC	1	67MPVCDI
43	NOZZLE,SOLACE,PVC	1	67MPVCSOL
44	NOZZLE,NORTHSTAR,PVC	1	67MPVCNST

FONT'N-AIRE READY CENTRIFUGAL PUMP COMPONENTS

5/06/2022

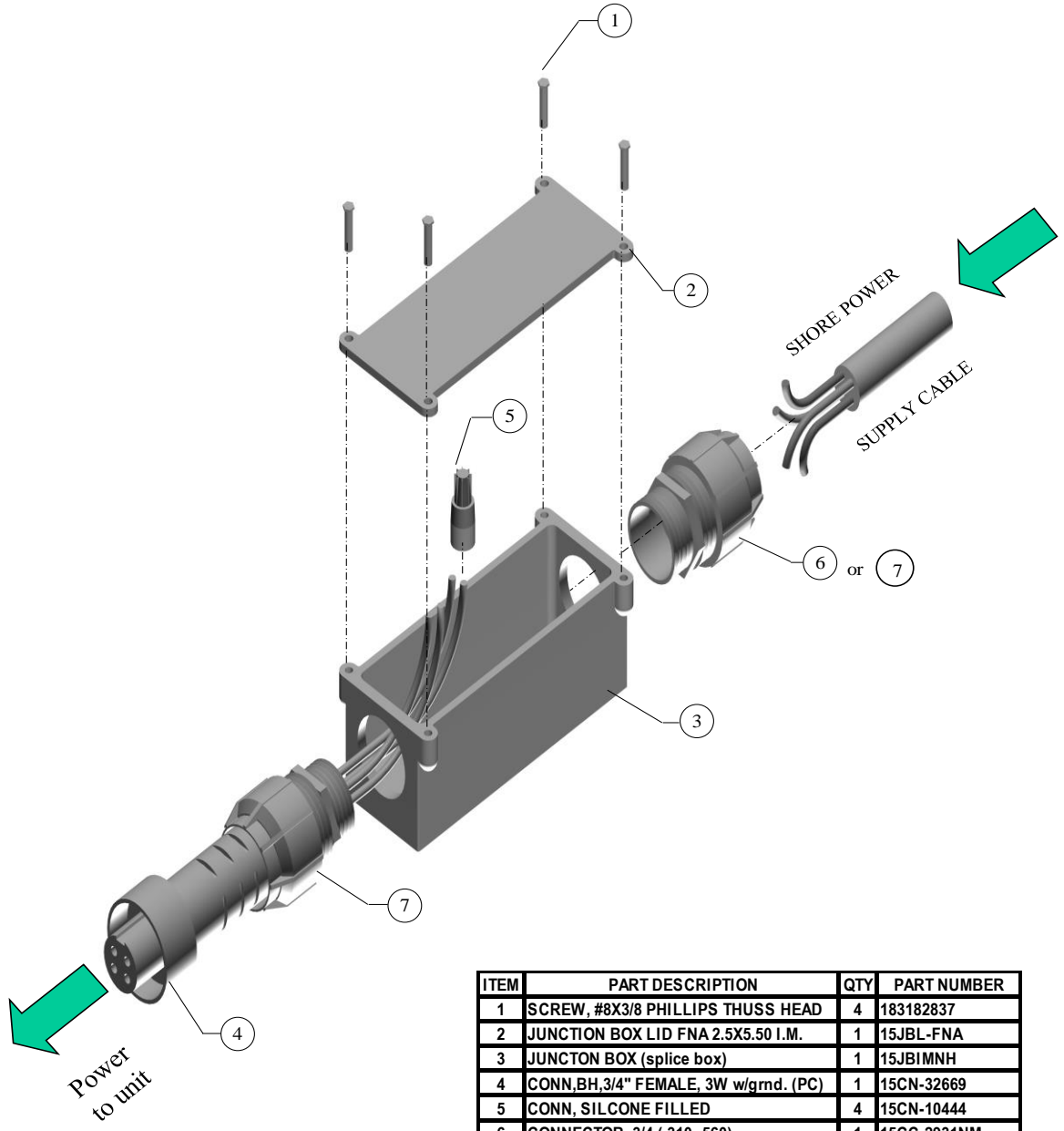
ITEM NO.	PART NUMBER	DESCRIPTION	PRICE
1	49214508061	MOTOR, 1HP, 230V, 1PH, 600M	1,254.00
2	58152735911	MOTOR LEAD 3 W, SF	62.00
3	90PVC12	1/2" PVC TUBE 8"	7.00
4	15MLC-FNA	MOTOR LEAD COVER	2.00
5	183182837	SCREW, #8X3/4"	0.20
6	04MMFAIM	MOTOR MOUNT	268.00
7	18078500	NUT, NYLON LOCK 5/16-24	0.50
8	18079025	FLAT WASHER 5/16	0.20
9	181024250	SCREW, 10-24 X 2-1/2	4.00
10	18AN960C10L	WASHER, 10, FLAT	0.05
11	15MMSC	MOTOR MOUNT SCREW CAP	0.05
12	18071NM10	NUT, LOCK, 10-24	1.00
13	85SP9	SPACER 9"	40.00
14	22FABIM	FLOAT ARM BRACKET	70.00
15	04SBFNAIM	SPREADER BAR	25.00
16	181024275	SCREW, 10-24X2-3/4" HHCS	4.00
17	1813643404	WASHER, FLAT, 10X3/4 OD	0.40
18	18071NM10	NUT, LOCK, 10-24	1.00
19	15CN-32681	CONNECTOR BH MALE, 3W	80.00
20	15CN-10444	SILICONE WIRE NUT, YELLOW	2.90
21	15JBIM	JUNCTION BOX	30.00
22	183182837	SCREW, #8X3/4"	0.20
23	15JBL-FNA	LID, JUNCTION BOX	5.00
24	70PGFNACP	PROP SHROUD	8.00
25	64PH-PIMG	PUMP HOUSING	90.00
26	64PHG2	GASKET, PUMP HOUSING	8.75
27	70CPIM1	IMPELLER ASSEMBLY, 1HP	62.00
28	64PR-PIMG	PUMP RETURN	90.00
29	64PRG2	GASKET, PUMP RETURN	8.75
30	64PRL-PIMG	PUMP LID	65.00
31	18079020	FLAT WASHER 1/4"	0.20
32	18101025275NP	SCREW, 1/4-20X2-3/4"NYLON	2.85
33	18101025375NP	SCREW, 1/4-20 X 3-3/4 W/NYLON	3.90
34	64GFN	GASKET, FNA NOZZLE	6.75
35	64WPCP	WATER PLENUM	26.00
36	1830622550NP	SCREW, 1/4-20X1/2 NYLON	1.25
37	64FSCP	FLOW STRAIGHTNER (CP)	7.75
38	29OR147	"O" RING #147	1.60
39	1830621050	SCREW, 10-24X1/2	0.20
40	67MPVCNOV	NOZZLE, NOVA	128.00
41	67MPVCGAL	NOZZLE, GALAXY	128.00
42	67MPVCDI	NOZZLE, DIANA	128.00
43	67MPVCSOL	NOZZLE, SOLACE	128.00
44	67MPVCNST	NOZZLE, NORTH STAR	128.00

FONT'N-AIRE READY
CENTRIFUGAL PUMP SUB. ASSY.

5/06/2022

PART NO.	DESCRIPTION	PRICE
90DSA-FNASF	DRIVE STRUCTURE FNA ASSY. (ITEMS 2-23)	760.00
90CPA1	CENTRIFUGAL PUMP ASSY. 1HP (ITEMS 24-33)	382.00
90NAPVCDIA	DIANA NOZZLE ASSY. WITH HARDWARE	130.00
90NAPVCGAL	GALAXY NOZZLE ASSY. WITH HARDWARE	130.00
90NAPVCNOR	NORTH STAR NOZZLE ASSY. WITH HARDWARE	130.00
90NAPVCNOV	NOVA NOZZLE ASSY. WITH HARDWARE	130.00
90NAPVCSOL	SOLACE NOZZLE ASSY. WITH HARDWARE	130.00
90WPA	WATER PLENUM ASSY W/FRD (ITEMS 34-37)	50.00
90MLA4SF	MOTOR LEAD ASSY, 3W, W/PVC & WIRE NUTS (ITEMS 2,3,20)	72.00
90ELCI26140	EQUIPMENT LOSS INTERRUPTOR, 230V, 20 AMP	130.00
90TR221-3	TIME SWITCH 240V, NEMA 3R ENC,W/CORD CLAMPS	220.00
5828240850	CONTROL BOX, 1HP, 230V, 1PH	218.00
15MPA13X15	MOUNTING PLATE, 15X13	105.00
90JBA3WFNAQ	JUNCTION BOX W/MALE BH, 3W W/GRND FOR FNA/AQ (items 18-23)	115.00
90CPGKIT	GASKIT KIT (ITEMS 29, 29, 34)	24.25
90MMFAIM	MOTOR MOUNT ASSEMBLY (ITEMS 4-12)	268.00
90FA40	FLOAT 40"	425.00
90DS40	DEBRIS SCREEN FOR 40" FLOAT	65.00
90CP1230R	CENTRIFUGAL PUMP ASSY, 1HP, 230V, 1PH, REDUCED, 600M	2,646.00
90CP1230S	CENTRIFUGAL PUMP ASSY, 1HP, 230V, 1PH, STANDARD, 600M	2,646.00
90CP102301	CENTRIFUGAL PUMP ASSY, 1HP, 230V, 1PH, STANDARD MOTOR	2,427.00
***NOTE: ASSEMBLY INCLUDES MOTOR, DRIVE STRUCTURE, PUMP & NOZZLE OF YOUR CHOICE (ITEMS 1-44)		
	LESS, FLOAT, WIRE & CONTROLS	
90RECP1230	CONTROL PANEL, READY W/O ENCLOSURE	705.00
94ECP12301	ETL CONTROL PANEL W/ENCLOSURE	1,250.00

SPLICE BOX ASSEMBLY
 90SPBA3W
 FOR 3 WIRE MOTOR



ITEM	PART DESCRIPTION	QTY	PART NUMBER
1	SCREW, #8X3/8 PHILLIPS THUSS HEAD	4	183182837
2	JUNCTION BOX LID FNA 2.5X5.50 I.M.	1	15JBL-FNA
3	JUNCTION BOX (splice box)	1	15JBMNH
4	CONN,BH,3/4" FEMALE, 3W w/gmd. (PC)	1	15CN-32669
5	CONN, SILCONE FILLED	4	15CN-10444
6	CONNECTOR, 3/4 (.310-.560)	1	15CC-2931NM
7	CONNECTOR, 3/4 (.500-.750)	1	15CC-2932NM

FONT'N-AIRE READY
WIRE ASSEMBLIES

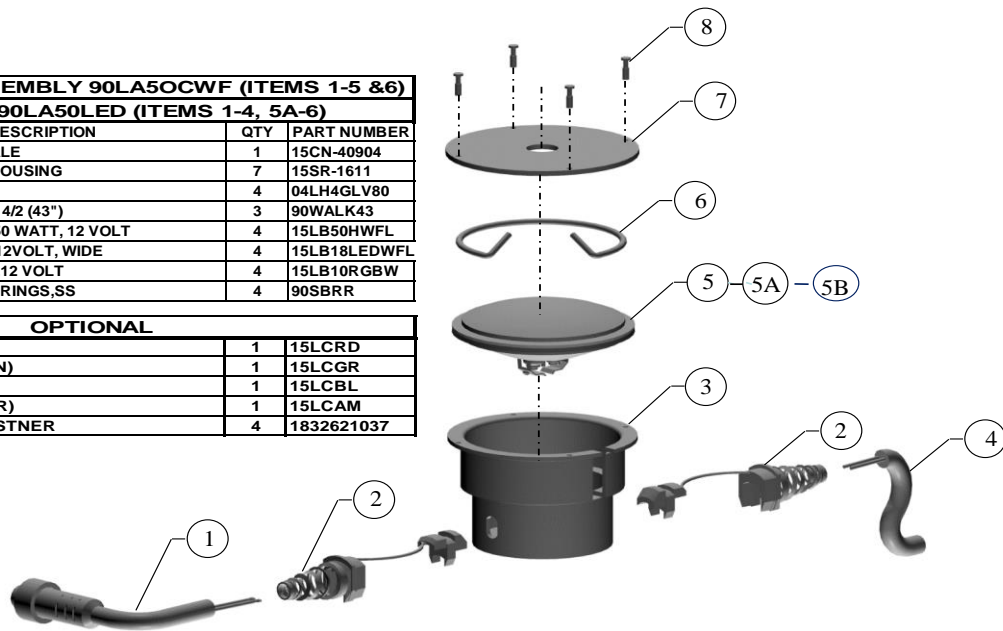
5/06/2022

PART NUMBER	DESCRIPTION	PRICE
90WA10012BH	WIRE ASSY., 100', 12/4 SJEOW, w/BH CONN. & SPLICE BOX	538.00
90WA15012BH	WIRE ASSY., 150', 12/4 SJEOW, w/BH CONN. & SPLICE BOX	683.00
90WA20012BH	WIRE ASSY., 200', 12/4 SJEOW, w/BH CONN. & SPLICE BOX	828.00
90WA25012BH	WIRE ASSY., 250', 12/4 SJEOW, w/BH CONN. & SPLICE BOX	973.00
90WA30012BH	WIRE ASSY., 300', 12/4 SJEOW, w/BH CONN. & SPLICE BOX	1,118.00
90WA35012BH	WIRE ASSY., 350', 12/4 SJEOW, w/BH CONN. & SPLICE BOX	1,263.00
90WA40012BH	WIRE ASSY., 400', 12/4 SJEOW, w/BH CONN. & SPLICE BOX	1,408.00
90WA10010BH	WIRE ASSY., 100', 10/4 SJEOW, w/BH CONN. & SPLICE BOX	618.00
90WA15010BH	WIRE ASSY., 150', 10/4 SJEOW, w/BH CONN. & SPLICE BOX	803.00
90WA20010BH	WIRE ASSY., 200', 10/4 SJEOW, w/BH CONN. & SPLICE BOX	988.00
90WA25010BH	WIRE ASSY., 250', 10/4 SJEOW, w/BH CONN. & SPLICE BOX	1,173.00
90WA30010BH	WIRE ASSY., 300', 10/4 SJEOW, w/BH CONN. & SPLICE BOX	1,358.00
90WA35010BH	WIRE ASSY., 350', 10/4 SJEOW, w/BH CONN. & SPLICE BOX	1,543.00
90WA40010BH	WIRE ASSY., 400', 10/4 SJEOW, w/BH CONN. & SPLICE BOX	1,728.00
	SEE SPLICE BOX ASSEMBLY, PAGE 7	
183182837	SCREW, #8X3/8, PHILLIPS TRUSS HEAD	0.20
15JBL-FNA	JUNCTION BOX LID, FNA, 2.5 X 5.50 I.M.	5.00
15JBIMNH	JUNCTION BOX (SPLICE BOX)	26.00
15CN-32669	CONNECTOR, BH, FEMALE, 3W w/grnd (PC)	160.00
15CN-10444	CONNECTOR, SILICONE FILLED	2.90
15CC-2931NM	CORD CONNECTOR, 3/4", (.310-.560) (FOR 12/4 WIRE)	20.00
15CC-2932NM	CORD CONNECTOR, 3/4". (.500-.750) (FOR 10/4 WIRE)	20.00
90CN32669	FEMALE BH CONN. ASSY. W/WIRE NUTS	210.00
90SPBA3W	SPLICE BOX ASSY., w/BH CONN.	248.00
15SJEOW12-4	WIRE, 12/4, SJEOW (price per ft.)	2.90
15SJEOW10-4	WIRE, 10/4, SJEOW (price per ft.)	3.70

LIGHT KIT ASSEMBLY PARTS LIST
 94LK230310, 230 VOLT, 3 WIRE

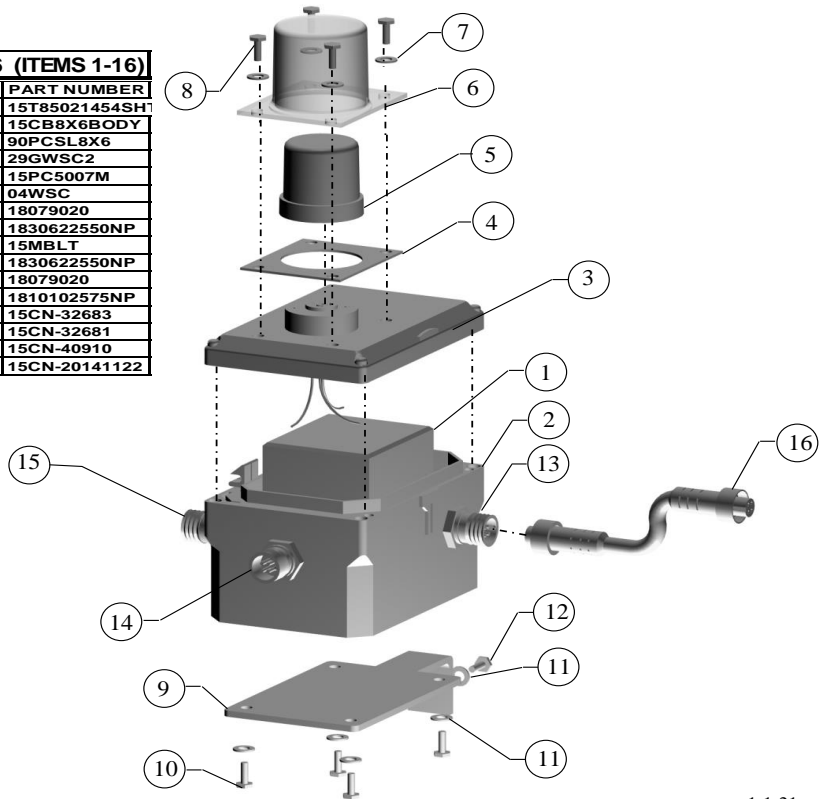
LIGHT STRING ASSEMBLY 90LA50CWF (ITEMS 1-5 & 6)			
LIGHT STRING LED 90LA50LED (ITEMS 1-4, 5A-6)			
ITEM	PART DESCRIPTION	QTY	PART NUMBER
1	CONN., BH.,12-VOLT, MALE	1	15CN-40904
2	STRAIN RELIEF LIGHT HOUSING	7	15SR-1611
3	LIGHT HOUSING, GLV80	4	04LH4GLV80
4	WIRE ASSY. LIGHT KIT, 14/2 (43")	3	90WALK43
5	HALOGEN SEAL BEAM 50 WATT, 12 VOLT	4	15LB50HWFL
5A	SEAL BEAM, LED, 18W, 12VOLT, WIDE	4	15LB18LEDWFL
5B	SEAL BEAM, RGBW, 10W, 12 VOLT	4	15LB10RGBW
6	SEAL BEAM, RETAINING RINGS, SS	4	90SBRR

OPTIONAL			
7	LENS COVER (RED)	1	15LCRD
7	LENS COVER (GREEN)	1	15LCGR
7	LENS COVER (BLUE)	1	15LCBL
7	LENS COVER (AMBER)	1	15LCAM
8	LENS RETAINING FASTNER	4	1832621037



LIGHT TRANSFORMER ASSEMBLY 90TXA230306 (ITEMS 1-16)

ITEM	PART DESCRIPTION	QTY	PART NUMBER
1	TRANSFORMER, 230V, 200VA	1	15T85021454SH
2	ENCLOSURE, 8X6X4	1	15CB8X6BODY
3	PHOTO CELL SOCKET W/LID	1	90PCSL8X6
4	GASKET, WATER SHIELD COVER	1	29GWSC2
5	PHOTO CELL	1	15PC5007M
6	WATER SHIELD COVER	1	04WSC
7	WASHER, 1/4", FLAT	4	18079020
8	SCREW, HHCS, 1/4-20X1/2, NYLON PATCH	4	1830622550NP
9	POWER PACK MOUNTING BRACKET	1	15MBLT
10	SCREW, 1/4-20X1/2", W/NYL. PATCH	4	1830622550NP
11	WASHER, 1/4", FLAT	4	18079020
12	SCREW, 1/4-20X3/4", W/NYL. PATCH	1	1810102575NP
13	CONN., BH, FEMALE, 3W, 240V	1	15CN-32683
14	CONN., BH, MALE, 3W, 240V	1	15CN-32681
15	CONN., BH, FEMALE, 12V	1	15CN-40910
16	QD DBL END MALE, 48", BLACK	1	15CN-20141122



LIGHT KIT COMPONENTS, 230-V 3 WIRE

5/6/2022

ITEM NO.	PART NUMBER	DESCRIPTION	PRICE
	90LA50CWF	LIGHT ASSY, WIDE FLOOD, (items 1-5 & 6)	565.00
	90LA50LED	LIGHT ASSY, LED (Items 1-4, 5A-6)	1040.00
	90LA50RGBW	LIGHT ASSY, RGBW (Items 1-4, 5B-6)	1485.00
1	15CN-40904	CONN, BH, 12-VOLT, MALE	60.00
2	15SR-1611	STRAIN RELIEF LIGHT HOUSING	3.00
3	04LH4GLV80	LIGHT HOUSING, GLV80	60.00
4	90WALK43	WIRE ASSY, LIGHT KIT, 14/2 (43")	35.00
5	15LB50HWFL	HALOGEN SEAL BEAM 50 WATT, 12 VOLT, WIDE	30.00
5A	15LB12LEDWFL	LED SEAL BEAM,PAR 36,12 VOLT, WIDE	148.75
5B	15LB10RGBW	RGBW SEAL BEAM,PAR 36, 12VOLT	200.00
6	90SBRR	SEAL BEAM RETAINING RING, SS	8.00
7	15LCRD	LENS COVER (RED)	8.00
7	15LCGR	LENS COVER (GREEN)	8.00
7	15LCBL	LENS COVER (BLUE)	8.00
7	15LCAM	LENS COVER (AMBER)	8.00
8	1832621037	LENS RETAINING FASTNER	0.50
	90TXA230306	LIGHT TRANSFORMER ASSY (ITEMS 1-16)	1570.00
1	15T85021454SHTB	TRANSFORMER,230V,200VA	520.00
2	15CB8X6BODY	ENCLOSURE,8X6X4	250.00
3	90PCSL8X6	PHOTO CELL SOCKET W/ LID	185.00
4	29GWSC2	GASKET, WATER SHIELD COVER	8.00
5	15PC5007M	PHOTO CELL	40.00
6	04WSC	WATER SHIELD COVER	30.00
7	18079020	WASHER, 1/4", FLAT	0.20
8	1830622550NP	SCREW, HHCS, 1/4-20X1/2, NYLON PATCH	1.25
9	15MBLT	POWER PACK MOUNTING BRACKET	30.00
10	1830622550NP	SCREW, 1/4-20X1/2", W/NYL PATCH	1.25
11	18079020	WASHER, 1/4", FLAT	0.20
12	1810102575NP	SCREW, 1/4-20X3/4", W/NYL PATCH	2.85
13	15CN-32683	CONN,BH,FEMALE,3W,240V	100.00
14	15CN-32681	CONN,BH,MALE,3W,240V	80.00
15	15CN-40910	CONN,BH,FEMALE,12V	50.00
16	15CN-20141122	QD DBL END 36" MALE & FEMALE, BLACK, LIGHT KIT	265.00
	90WSC	WATER SHIELD COVER ASSY (ITEMS 4, 6-8)	48.00
	90CWS10	COUNTER WEIGHT	72.00
	90TP230306	TRANSFORMER PACK,230-12,3W (ITEMS 1-8 & 13-15)	1280.00
	90LCRP	LENS COVER RETAINING FASTENER KIT (16 FASTENER)	8.00
	90CLC-SET	LENS COVER SET, ONE EACH COLOR	42.00
	90CLC-AMP	LENS COVER, AMBER WITH RETAINING FASTENER	10.50
	90CLC-BLP	LENS COVER, BLUE WITH RETAINING FASTENER	10.50
	90CLC-GRP	LENS COVER, GREEN WITH RETAINING FASTENER	10.50
	90CLC-RDP	LENS COVER, RED WITH RETAINING FASTENER	10.50