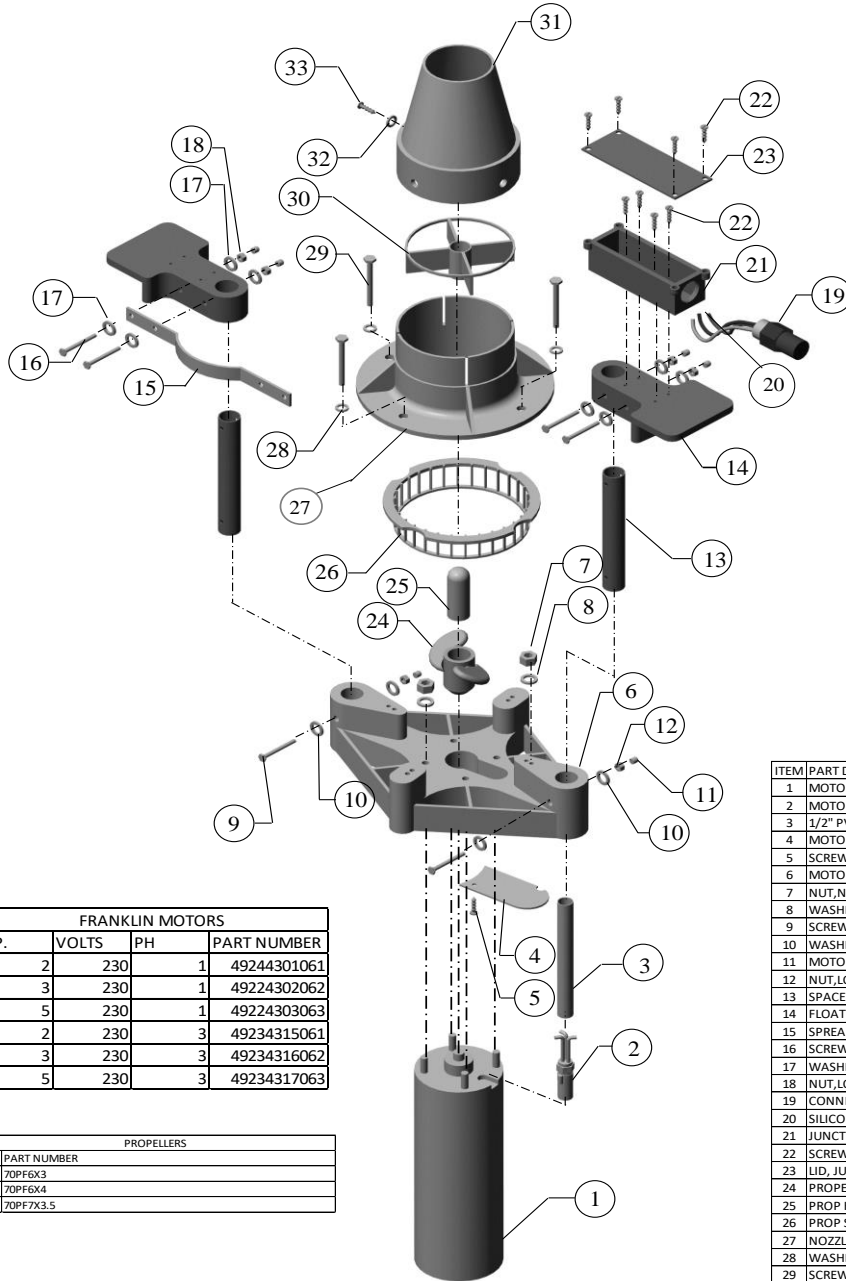


FONT'N-AIRE PLATINUM PROPELLER PUMP PARTS LIST



FRANKLIN MOTORS			
H.P.	VOLTS	PH	PART NUMBER
2	230	1	49244301061
3	230	1	49224302062
5	230	1	49224303063
2	230	3	49234315061
3	230	3	49234316062
5	230	3	49234317063

PROPELLERS	
H.P.	PART NUMBER
2	Z0PF6X3
3	Z0PF6X4
5	Z0PF7X3.5

ITEM	PART DESCRIPTION	QTY	PART NUMBER
1	MOTOR FRANKLIN,600M	1	SEE LISTING
2	MOTOR LEAD,3W,SF	1	58152735911
3	1/2" PVC TUBE	1	90PVC12
4	MOTOR LEAD COVER	1	15MLC-FNA
5	SCREW,#8X3/8"	2	183182837
6	MOTOR MOUNT,INJECTION MOLDED	1	04MMFAIM
7	NUT,NYLON LOCK,5/16-24	4	18078500
8	WASHER,FLAT,5/16"	4	18079025
9	SCREW,#10-24X2-1/2"	2	181024250
10	WASHER,#10,FLAT	4	18AN960C10L
11	MOTOR MOUNT SCREW CAP	2	15MMSC
12	NUT,LOCK,10-24	2	18071NM10
13	SPACER,9"	2	855P9
14	FLOAT ARM BRACKET	2	22FABIM
15	SPREADER BAR	2	04SBFNAIM
16	SCREW,10-24X2-3/4",HHCS	4	181024275
17	WASHER,FLAT,10X3/4 OD	8	1813643404
18	NUT,LOCK,10-24	4	18071NM10
19	CONNECTOR,BH,MALE,3W	1	15CN-32681
20	SILICONE WIRE NUT, YELLOW	4	15CN-10444
21	JUNCTION BOX	1	15JBIM
22	SCREW,#8X3/8"	8	183182837
23	LID, JUNCTION BOX	1	15JBL-FNA
24	PROPELLER	1	SEE LISTING
25	PROP KEEPER	1	70PKP2
26	PROP SHROUD	1	70PFGNA
27	NOZZLE, THROAT, 5"	1	04NTMI
28	WASHER,FLAT,1/4"	4	18079020
29	SCREW,1/4-20X3/4",NLYON, PATCH	4	1810102575NP
30	FLOW STRAIGHTNER	1	64FSPPII
31	NOZZLE, CARNIVAL	1	04NCIM
32	WASHER,FLAT,1/4"	4	18079020
33	SCREW,1/4-20X1/2",NLYON PATCH	4	1830622550NP

FONT'N-AIRE PLATINUM PROPELLER PUMP COMPONENTS

5/27/22

ITEM NO.	PART NUMBER	DESCRIPTION	PRICE
1	MOTOR	SEE MOTOR PRICE SHEET	0.00
2	58152735911	MOTOR LEAD 3 W, SF	62.00
3	90PVC12	1/2" PVC TUBE 8"	7.00
4	15MLC-FNA	MOTOR LEAD COVER	2.00
5	183182837	SCREW, #8X3/4"	0.20
6	04MMFAIM	MOTOR MOUNT, INJECTION MOLDED	268.00
7	18078500	NUT, NYLON LOCK 5/16-24	0.50
8	18079025	FLAT WASHER 5/16"	0.20
9	181024250	SCREW, 10-24 X 2-1/2	4.00
10	18AN960C10L	WASHER, 10, FLAT	0.05
11	15MMSC	MOTOR MOUNT SCREW CAP	0.05
12	18071NM10	NUT, LOCK, 10-24	1.00
13	85SP9	SPACER 9"	40.00
14	22FABIM	FLOAT ARM BRACKET	70.00
15	04SBFNAIM	SPREADER BAR	25.00
16	181024275	SCREW, 10-24X2-3/4" HHCS	4.00
17	1813643404	WASHER, FLAT, 10X3/4 OD	0.40
18	18071NM10	NUT, LOCK, 10-24	1.00
19	15CN-32681	CONNECTOR BH MALE, 3W	80.00
20	15CN-10444	SILICONE WIRE NUT, YELLOW	2.90
21	15JBIM	JUNCTION BOX	30.00
22	183182837	SCREW, #8X3/4"	0.20
23	15JBL-FNA	LID, JUNCTION BOX	5.00
24	PROPELLER	SEE PROPELLER PRICE SHEET	0.00
25	70PKP2	PROP KEEPER	1.75
26	70PGFNA	PROP SHROUD	8.00
27	04NTIMII	NOZZLE, THROAT 5"	165.00
28	18079020	WASHER, FLAT 1/4	0.20
29	1810102575NP	SCREW 1/4-20X3/4", NYLON, PATCH	2.85
30	64FSPPII	FLOW STRAIGHTENER	7.75
31	04NCIM	NOZZLE, CARNIVAL	165.00
32	18079020	WASHER, FLAT 1/4	0.20
33	1830622550NP	SCREW, 1/4-20X1/2", NYLON	1.25

FONT'N-AIRE PLATINUM
PROPELLER PUMP SUB. ASSY.

5/27/22

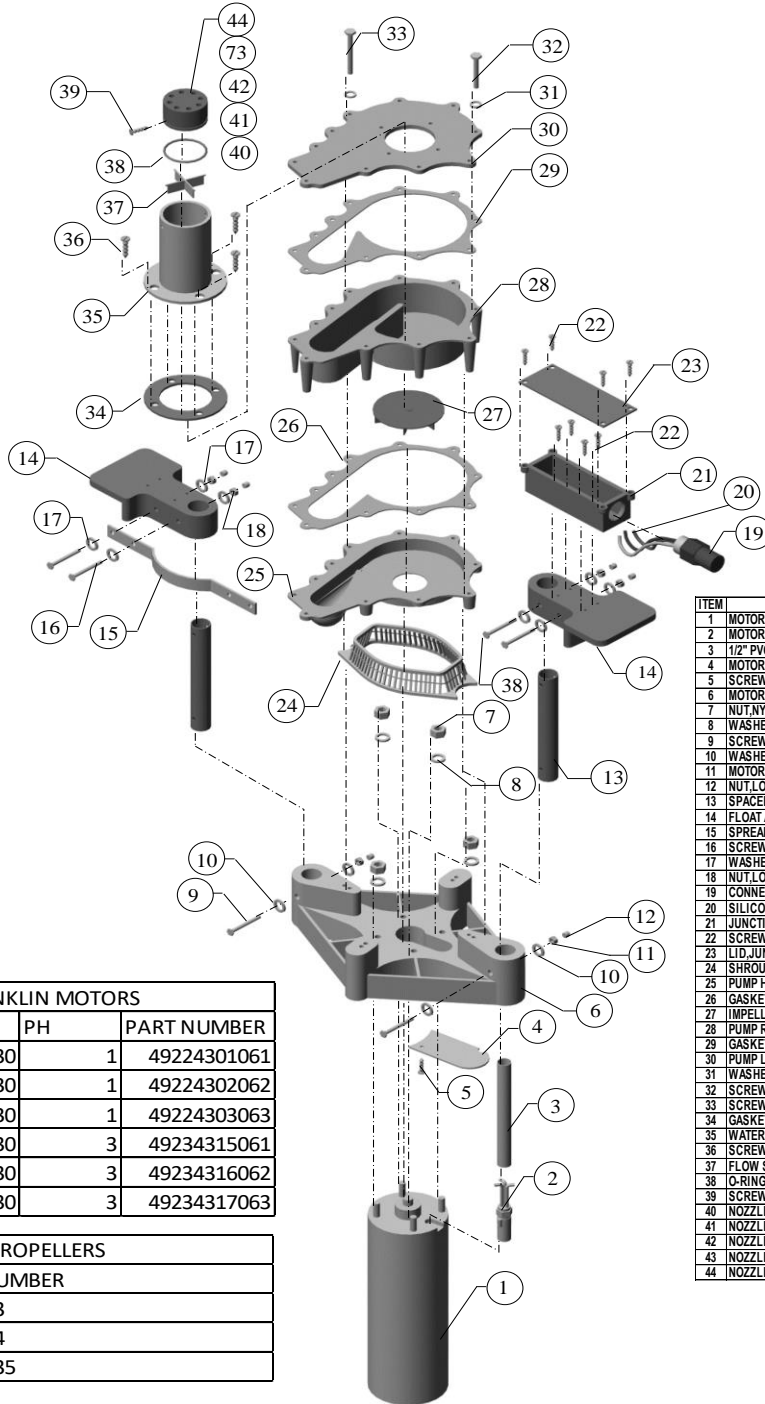
PART NO.	DESCRIPTION	PRICE
90DSA-FNASF	DRIVE STRUCTURE FNA ASSY. (ITEMS 2-23)	760.00
90NACARIMII	CARNIVAL NOZZLE ASSY. (ITEMS 26-33)	325.00
90MLA4SF	MOTOR LEAD ASSY, 3W, W/PVC & WIRE NUTS (ITEMS 2,3,20)	72.00
90FA40	FLOAT 40"	425.00
90DS40	DEBRIS SCREEN FOR 40" FLOAT	65.00
90JBA3WFNAQ	JUNCTION BOX W/MALE BH, 3W W/GRND FOR FNA/AQ (items 19-23)	115.00

FONT'N-AIRE PLATINUM
 PROPELLER PUMP POWER DRIVE ASSEMBLIES

5/27/22

P/N	DESCRIPTION	PRICE
90PP202301	PROPELLER PUMP, 2/230/1 (PD)	3,099.00
90PP302301	PROPELLER PUMP, 3/230/1 (PD)	3,561.00
90PP502301	PROPELLER PUMP, 5/230/1 (PD)	4,592.00
90PP1523003	PROPELLER PUMP, 1.5/230/3 (PD)	2,840.00
90PP202303	PROPELLER PUMP, 2/230/3 (PD)	2,950.00
90PP302303	PROPELLER PUMP, 3/230/3 (PD)	3,211.00
90PP502303	PROPELLER PUMP, 5/230/3 (PD)	4,313.00
***NOTE: ASSEMBLY INCLUDES MOTOR, PROPELLER, DRIVE STRUCTURE & NOZZLE (ITEMS 1-44)		
LESS FLOAT, WIRE & CONROLS		

**FONT'N-AIRE PLATINUM
CENTRIFUGAL PUMP PARTS LIST**



ITEM	PART DESCRIPTION	QTY	PART NUMBER
1	MOTOR, 1HP, 230V, 1PH, 600M	1	49214508061
2	MOTOR LEAD, 3W	1	58152735911
3	1/2" PVC TUBE	1	90PVC12
4	MOTOR LEAD COVER	1	15MLC-FNA
5	SCREW,#8 X 3/8"	4	183182837
6	MOTOR MOUNT, INJECTION MOLDE	4	04MMFAM
7	NUT,NYLON LOCK,5/16-24	4	18078500
8	WASHER,FLAT,5/16"	4	181079025
9	SCREW,#10-24X2-1/2"	2	18024250
10	WASHER,#10 FLAT	4	18AN960C10L
11	MOTOR MOUNT SCREW CAP	2	15MMS C
12	NUT,LOCK,10-24	2	18071NM10
13	SPACER,9"	2	85SP9
14	FLOAT ARM BRACLET	2	22FABIM
15	SPREADER BAR	2	045BFNAIM
16	SCREW,10-24X2-3/4",HHCS	4	181024275
17	WASHER,FLAT,10X3.4 OD	8	1813643404
18	NUT,LOCK,10-24	2	18071NM10
19	CONNECTOR,BH,MALE,3W	1	15CN-32681
20	SILICONE WIRE NUT,YELLOW	4	15CN-10444
21	JUNCTION BOX	1	15JBIM
22	SCREW,#8X3/8"	8	183182837
23	LID,JUNCTION BOX	1	15JBL-FNA
24	SHROUD,FNA-CP	1	70PGFNACP
25	PUMP HOUSING	1	64PH-PIMG
26	GASKET,PUMP HOUSING	1	64PHG2
27	IMPELLER,1-HP	1	70CPIM1
28	PUMP RETURN	1	64PR-PIMG
29	GASKET,PUMP RETURN	1	64PRG2
30	PUMP LID	1	64PRL-PIMG
31	WASHER,FLAT,1/4"	11	18079020
32	SCREW,1/4-20X2-3/4" W/NYLON	7	18101025275NP
33	SCREW,1/4-20X3-3/4" W/NYLON	4	18101025375NP
34	GASKET,FNA NOZZLE	1	64GFN
35	WATER PLENUM	1	64WPCP
36	SCREW,1/4-20X1/2",NYLON	4	1830622550NP
37	FLOW STRAIGHTENER,CP	1	64FSCP
38	O-RING,#147	1	29OR147
39	SCREW,10-24X2-1/2"	2	1830621050
40	NOZZLE,NOVA,PVC	1	67MPVCNOV
41	NOZZLE,GALAXY,PVC	1	67MPVCGAL
42	NOZZLE,DIANA,PVC	1	67MPVCDI
43	NOZZLE,SOLACE,PVC	1	67MPVCSOL
44	NOZZLE,NORTHSTAR,PVC	1	67MPVCNST

FRANKLIN MOTORS			
H.P.	VOLTS	PH	PART NUMBER
2	230	1	49224301061
3	230	1	49224302062
5	230	1	49224303063
2	230	3	49234315061
3	230	3	49234316062
5	230	3	49234317063

PROPELLERS	
H.P.	PART NUMBER
2	70PF6X3
3	70PF6X4
5	70PF7X35

FONT'N-AIRE PLATINUM
CENTRIFUGAL PUMP COMPONENTS

5/27/22

ITEM NO.	PART NUMBER	DESCRIPTION	PRICE
1	MOTOR	SEE MOTOR PRICE SHEET	0.00
2	58152735911	MOTOR LEAD 3 W, SF,PVC & NUTS	62.00
3	90PVC12	1/2" PVC TUBE 8"	7.00
4	15MLC-FNA	MOTOR LEAD COVER	2.00
5	183182837	SCREW, #8X3/8"	0.20
6	04MMFAIM	MOTOR MOUNT	268.00
7	18078500	NUT, NYLON LOCK 5/16-24	0.50
8	18079025	FLAT WASHER 5/16	0.20
9	181024250	SCREW, 10-24 X 2-1/2	4.00
10	18AN960C10L	WASHER, 10, FLAT	0.05
11	15MMSC	MOTOR MOUNT SCREW CAP	0.05
12	18071NM10	NUT, LOCK, 10-24	1.00
13	85SP9	SPACER 9"	40.00
14	22FABIM	FLOAT ARM BRACKET	70.00
15	04SBFNAIM	SPREADER BAR	25.00
16	181024275	SCREW, 10-24X2-3/4" HHCS	4.00
17	1813643404	WASHER, FLAT, 10X3/4 OD	0.40
18	18071NM10	NUT, LOCK, 10-24	1.00
19	15CN-32681	CONNECTOR BH MALE	80.00
20	15CN-10444	SILICONE WIRE NUT, YELLOW	2.90
21	15JBIM	JUNCTION BOX	30.00
22	183182837	SCREW #8X3/8"	0.20
23	15JBL-FNA	LID, JUNCTION BOX	5.00
24	70PGFNACP	PROP SHROUD	8.00
25	64PH-PIMG	PUMP HOUSING	90.00
26	64PHG2	GASKET, PUMP HOUSING	8.75
27	IMPELLER	SEE IMPELLER PRICE SHEET	62.00
28	64PR-PIMG	PUMP RETURN	90.00
29	64PRG2	GASKET, PUMP RETURN	8.75
30	64PRL-PIMG	PUMP LID	65.00
31	18079020	FLAT WASHER 1/4"	0.20
32	18101025275NP	SCREW, HHCS, 1/4-20X2-3/4"NYLON	2.85
33	18101025375NP	SCREW, 1/4-20 X 3-3/4 W/NYLON	3.90
34	64GFN	GASKET, FNA NOZZLE	6.75
35	64WPCP	WATER PLENUM	26.00
36	1830622550NP	SCREW, 1/4-20X1/2 NYLON	1.25
37	64FSCP	FLOW STRAIGHTNER (CP)	7.75
38	29OR147	"O" RING #147	1.60
39	1830621050	SCREW, 10-24X1/2	0.20
40	67MPVCNOV	NOZZLE, NOVA, PVC	128.00
41	67MPVCGAL	NOZZLE, GALAXY, PVC	128.00
42	67MPVCDI	NOZZLE, Diana, PVC	128.00
43	67MPVCSOL	NOZZLE, Solace, PVC	128.00
44	67MPVCNST	NOZZLE, NorthStar, PVC	128.00

FONT'N-AIRE PLATINUM
 CENTRIFUGAL PUMP
 POWER DRIVE ASSEMBLIES

5/27/22

P/N	DESCRIPTION	PRICE
90CP202301	CENTRIFUGAL PUMP, 2/230/1 (PD)	3,041.00
90CP302301	CENTRIFUGAL PUMP, 3/230/1 (PD)	3,503.00
90CP502301	CENTRIFUGAL PUMP, 5/230/1, 1 (PD)	4,624.00
90CP152303	CENTRIFUGAL PUMP, 1.5/230/3 (PD)	2,782.00
90CP202303	CENTRIFUGAL PUMP, 2/230/3 (PD)	2,892.00
90CP302303	CENTRIFUGAL PUMP, 3/230/3 (PD)	3,153.00
90CP502303	CENTRIFUGAL PUMP, 5/230/3 (PD)	4,345.00
***NOTE: ASSEMBLY INCLUDES MOTOR, DRIVE STRUCTURE, PUMP & NOZZLE OF YOUR CHOICE (ITEMS 1-44)		
LESS, FLOAT, WIRE & CONTROLS		

FONT'N-AIRE PLATINUM
FRANKLIN MOTORS

5/27/22

PART NUMBER	DESCRIPTION	PRICE
49224301061	2 HP., 230 VOLT, 1 PH., 60 Hz., 600M	1,599.00
49224302062	3 HP., 230 VOLT, 1 PH., 60 Hz., 600M	2,061.00
49224303063	5 HP., 230 VOLT, 1 PH., 60 Hz., 600M	3,052.00
49234524061	1.5 HP, 230 VOLT, 3 PH., 60 Hz, 600M	1,340.00
49234315061	2 HP, 230 VOLT, 3 PH., 60 Hz, 600M	1,450.00
49234316062	3 HP., 230 VOLT, 3 PH., 60 Hz, 600M	1,711.00
49234317063	5 HP., 230 VOLT, 3 PH., 60 Hz, 600M	2,773.00

FONT'N-AIRE PLATINUM
CONTROL PANELS

5/27/22

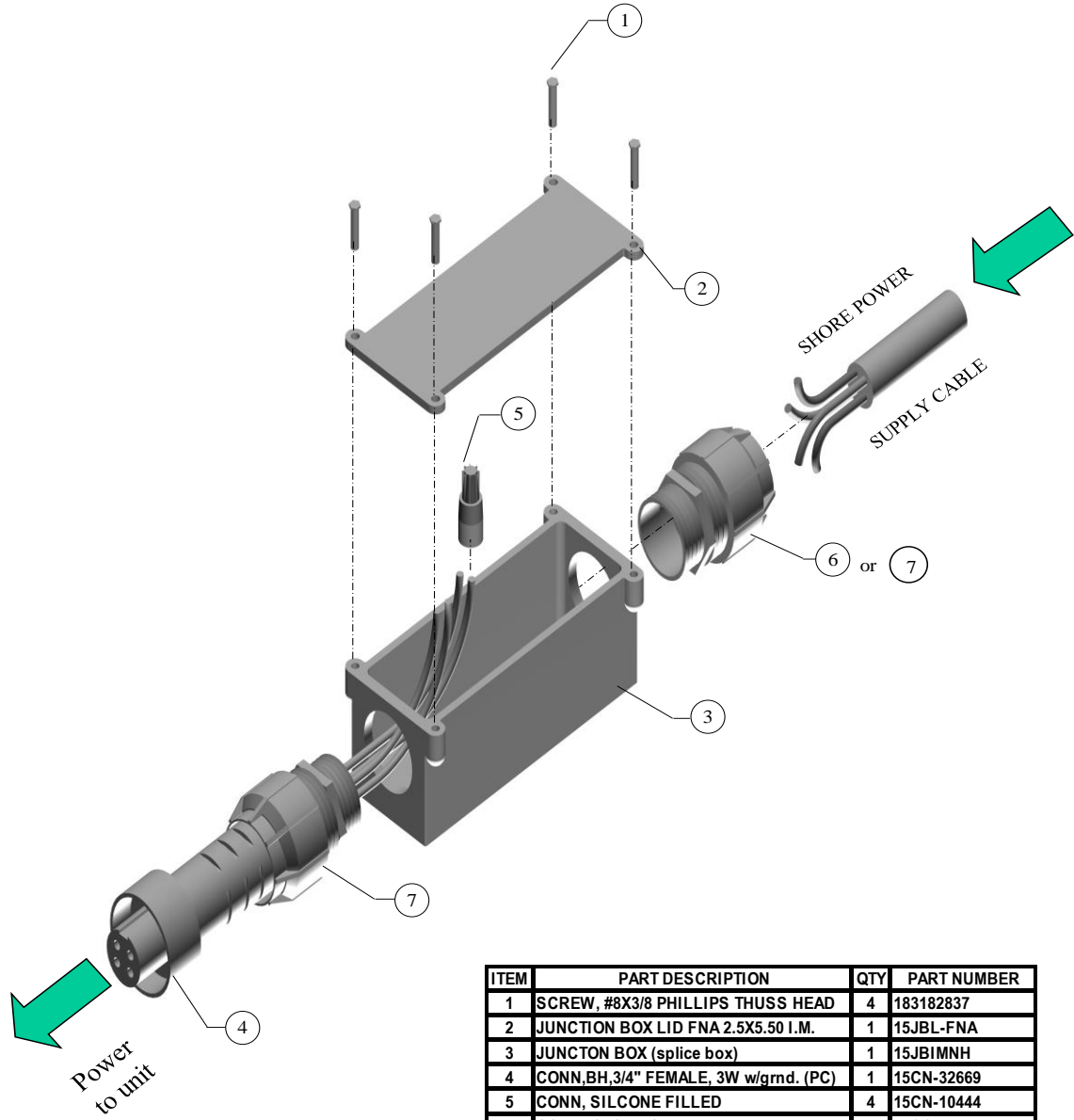
PART NUMBER	DESCRIPTION	PRICE
94ECP22301	CONTROL PANEL, ETL, 2HP, 230V, 1PH	1,595.00
94ECP32301	CONTROL PANEL, ETL, 3HP, 230V, 1PH	1,990.00
94ECP52301	CONTROL PANEL, ETL, 5HP, 230V, 1PH	2,375.00
94ECP152303	CONTROL PANEL ETL, 1.5HP, 230V, 3PH	2,255.00
94ECP22303	CONTROL PANEL ETL, 2HP, 230V, 3PH	2,260.00
94ECP32303	CONTROL PANEL, ETL, 3HP, 230V, 3PH	2,490.00
94ECP52303	CONTROL PANEL, ETL, 5HP, 230V, 3PH	2,875.00

FONT'N-AIRE PLATINUM
CONTROL PANEL COMPONENTS

5/27/22

PART NUMBER	DESCRIPTION	PRICE
15CB-H16147H	ENCLOSURE 16 X 14	425.00
15MPA13X15	MOUNTING PLATE, COMPONENT	105.00
15TS-M221-3	TIME CLOCK, 230 VOLT	200.00
15TMP-A4511B	MOUNTING PLATE, TIMER	15.00
90GFCI44760	EQUIPMENT LOSS INTERRUPTOR, 230V, 30 AMP	140.00
15TB11512017	TERMINAL BLOCK, BODY	3.90
15TBES118368	TERMINAL BLOCK, END SECTION	1.00
15TBES10300206	TERMINAL BLOCK, END STOP	2.30
1 PHASE ONLY		
9028230181	BOX,CAPACITOR,STANDARD,2/230/1	274.00
9028230281	BOX,CAPACITOR,STANDARD,3/230/1	333.00
9028211381	BOX,CAPACITOR,STANDARD,5/230/1	505.00
3 PHASE ONLY		
15BR3040	DISC. SWITCH 3ph, ROTARY, 40 AMP	348.00
15BRS180	SHAFT, 180 MM	85.00
15BRH4	HANDLE, RED/YELLOW, ON/OFF	150.00
15F-ATDR4	FUSE 4 AMP.	47.00
15F-ATDR6	FUSE 6 AMP.	47.00
15F-ATDR7	FUSE 7 AMP.	65.00
15F-ATDR10	FUSE 10 AMP.	65.00
15F-ATDR12	FUSE 12 AMP.	65.00
15F-ATDR20	FUSE 20 AMP.	65.00
15C3RT1025	CONTACTOR, 240-VOLT, COIL	270.00
15R-26-1HBO	RELAY, 2HP/230	245.00
15R-26-1KBO	RELAY, 3hp/230	245.00
15R-26-4BBO	RELAY, 5hp/230	245.00
90TB1PH	TERMINAL BLOCK ASSY, 1 PHASE	55.00
90TB3PH	TERMINAL BLOCK ASSY, 3 PHASE	35.00

SPLICE BOX ASSEMBLY
90SPBA3W
FOR 3 WIRE MOTOR



ITEM	PART DESCRIPTION	QTY	PART NUMBER
1	SCREW, #8X3/8 PHILLIPS THUSS HEAD	4	183182837
2	JUNCTION BOX LID FNA 2.5X5.50 I.M.	1	15JBL-FNA
3	JUNCTON BOX (splice box)	1	15JBIMNH
4	CONN,BH,3/4" FEMALE, 3W w/grnd. (PC)	1	15CN-32669
5	CONN, SILCONE FILLED	4	15CN-10444
6	CONNECTOR, 3/4 (.310-.560)	1	15CC-2931NM
7	CONNECTOR, 3/4 (.500-.750)	1	15CC-2932NM

FONT'N-AIRE PLATINUM
WIRE ASSEMBLIES

5/27/2022

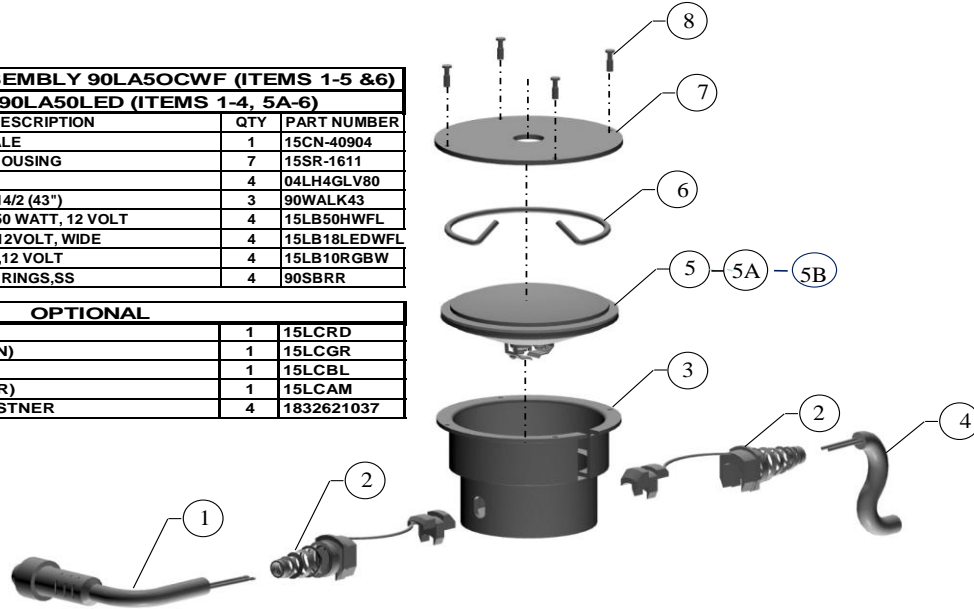
PART NUMBER	DESCRIPTION	PRICE
90WA10012BH	WIRE ASSY., 100', 12/4 SJEOW, w/BH CONN. & SPLICE BOX	538.00
90WA15012BH	WIRE ASSY., 150', 12/4 SJEOW, w/BH CONN. & SPLICE BOX	683.00
90WA20012BH	WIRE ASSY., 200', 12/4 SJEOW, w/BH CONN. & SPLICE BOX	828.00
90WA25012BH	WIRE ASSY., 250', 12/4 SJEOW, w/BH CONN. & SPLICE BOX	973.00
90WA30012BH	WIRE ASSY., 300', 12/4 SJEOW, w/BH CONN. & SPLICE BOX	1,118.00
90WA35012BH	WIRE ASSY., 350', 12/4 SJEOW, w/BH CONN. & SPLICE BOX	1,263.00
90WA40012BH	WIRE ASSY., 400', 12/4 SJEOW, w/BH CONN. & SPLICE BOX	1,408.00
90WA10010BH	WIRE ASSY., 100', 10/4 SJEOW, w/BH CONN. & SPLICE BOX	618.00
90WA15010BH	WIRE ASSY., 150', 10/4 SJEOW, w/BH CONN. & SPLICE BOX	803.00
90WA20010BH	WIRE ASSY., 200', 10/4 SJEOW, w/BH CONN. & SPLICE BOX	988.00
90WA25010BH	WIRE ASSY., 250', 10/4 SJEOW, w/BH CONN. & SPLICE BOX	1,173.00
90WA30010BH	WIRE ASSY., 300', 10/4 SJEOW, w/BH CONN. & SPLICE BOX	1,358.00
90WA35010BH	WIRE ASSY., 350', 10/4 SJEOW, w/BH CONN. & SPLICE BOX	1,543.00
90WA40010BH	WIRE ASSY., 400', 10/4 SJEOW, w/BH CONN. & SPLICE BOX	1,728.00
	SEE SPLICE BOX ASSEMBLY, PAGE 14	
183182837	SCREW, #8X3/8 PHILLIPS TRUSS HEAD	0.20
15JBL-FNA	JUNCTION BOX LID, FNA, 2.5X5.50, I.M.	5.00
15JBIMNH	JUNCTION BOX (SPLICE BOX)	26.00
15CN-32669	CONNECTOR, BH, FEMALE, 3W W/GRND. (pc)	160.00
15CN-10444	CONNECTOR, SILICONE FILLED	2.90
15CC-2931NM	CORD CONNECTOR, 3/4" (.310-.560) (FOR 12/4 WIRE)	20.00
15CC-2932NM	CORD CONNECTOR, 3/4" (.500-.750) (FOR 10/4 WIRE)	20.00
90CN32669	FEMALE BH CONN. ASSY. W/WIRE NUTS	210.00
90SPBA3W	SPLICE BOX ASSY., w/BH CONN.	248.00
15SJEOW12-4	WIRE, 12/4, SJEOW (price per ft.)	2.90
15SJEOW10-4	WIRE, 10/4, SJEOW (price per ft.)	3.70

LIGHT KIT ASSEMBLY PARTS LIST
94LK230310, 230 VOLT, 3 WIRE

LIGHT STRING ASSEMBLY 90LA50CWF (ITEMS 1-5 &6)

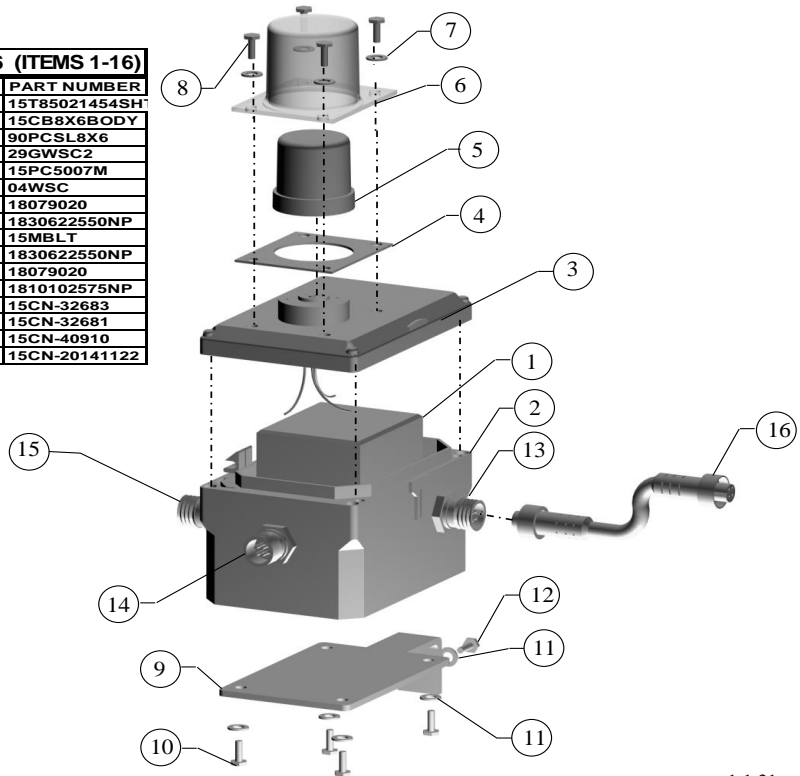
LIGHT STRING LED 90LA50LED (ITEMS 1-4, 5A-6)			
ITEM	PART DESCRIPTION	QTY	PART NUMBER
1	CONN. BH.,12-VOLT, MALE	1	15CN-40904
2	STRAIN RELIEF LIGHT HOUSING	7	15SR-1611
3	LIGHT HOUSING, GLV80	4	04LH4GLV80
4	WIRE ASSY. LIGHT KIT, 14/2 (43")	3	90WALK43
5	HALOGEN SEAL BEAM 50 WATT, 12 VOLT	4	15LB50HWFL
5A	SEAL BEAM, LED, 18W, 12VOLT, WIDE	4	15LB18LEDWFL
5B	SEAL BEAM, RGBW, 10W, 12 VOLT	4	15LB10RGBW
6	SEAL BEAM, RETAINING RINGS, SS	4	90SBRR

OPTIONAL			
7	LENS COVER (RED)	1	15LCRD
7	LENS COVER (GREEN)	1	15LCGR
7	LENS COVER (BLUE)	1	15LCBL
7	LENS COVER (AMBER)	1	15LCAM
8	LENS RETAINING FASTNER	4	1832621037



LIGHT TRANSFORMER ASSEMBLY 90TXA230306 (ITEMS 1-16)

ITEM	PART DESCRIPTION	QTY	PART NUMBER
1	TRANSFORMER, 230V, 200VA	1	15T85021454SH
2	ENCLOSURE, 8X6X4	1	15CB8X6BODY
3	PHOTO CELL SOCKET W/LID	1	90PCSL8X6
4	GASKET, WATER SHIELD COVER	1	29GWSC2
5	PHOTO CELL	1	15PC5007M
6	WATER SHIELD COVER	1	04WSC
7	WASHER, 1/4", FLAT	4	18079020
8	SCREW, HHCS, 1/4-20X1/2, NYLON PATCH	4	1830622550NP
9	POWER PACK MOUNTING BRACKET	1	15MBLT
10	SCREW, 1/4-20X1/2", W/NYL. PATCH	4	1830622550NP
11	WASHER, 1/4", FLAT	4	18079020
12	SCREW, 1/4-20X3/4", W/NYL. PATCH	1	1810102575NP
13	CONN., BH, FEMALE, 3W, 240V	1	15CN-32683
14	CONN., BH, MALE, 3W, 240V	1	15CN-32681
15	CONN., BH, FEMALE, 12V	1	15CN-40910
16	QD DBL END MALE, 48", BLACK	1	15CN-20141122



LIGHT KIT COMPONENTS, 230V, 3 WIRE

5/27/2022

ITEM NO.	PART NUMBER	DESCRIPTION	PRICE
	90LA50CWF	LIGHT ASSY, WIDE FLOOD, (items 1-5 & 6)	565.00
	90LA50LED	LIGHT ASSY, LED (1-4, 5A-6)	1040.00
	90LA50RGBW	LIGHT ASSY, RGBW (items 1-4, 5B-6)	1485.00
1	15CN-40904	CONN, BH, 12-VOLT, MALE	60.00
2	15SR-1611	STRAIN RELIEF LIGHT HOUSING	3.00
3	04LH4GLV80	LIGHT HOUSING, GLV80	60.00
4	90WALK43	WIRE ASSY, LIGHT KIT, 14/2 (43")	35.00
5	15LB50HWFL	HALOGEN SEAL BEAM 50 WATT, 12 VOLT	30.00
5A	15LB12LEDWFL	LED SEAL BEAM,PAR 36,12 VOLT	148.75
5B	15LB10RGBQ	RGBW SEAL BEAM,PAR 36.12VOLT,10W	200.00
6	90SBRR	SEAL BEAM RETAINING RING, SS	8.00
7	15LCRD	LENS COVER (RED)	8.00
7	15LCGR	LENS COVER (GREEN)	8.00
7	15LCBL	LENS COVER (BLUE)	8.00
7	15LCAM	LENS COVER (AMBER)	8.00
8	1832621037	LENS RETAINING FASTNER	0.50
	90TXA230306	LIGHT TRANSFORMER ASSY (ITEMS 1-16)	1570.00
1	15T85021454SHTB	TRANSFORMER,230V,200VA	520.00
2	15CB8X6BODY	ENCLOSURE,8X6X4	250.00
3	90PCSL8X6	PHOTO CELL SOCKET W/ LID	185.00
4	29GWSC2	GASKET, WATER SHIELD COVER	8.00
5	15PC5007M	PHOTO CELL	40.00
6	04WSC	WATER SHIELD COVER	30.00
7	18079020	WASHER, 1/4", FLAT	0.20
8	1830622550NP	SCREW, HHCS, 1/4-20X1/2, NYLON PATCH	1.25
9	15MBLT	POWER PACK MOUNTING BRACKET	30.00
10	1830622550NP	SCREW, 1/4-20X1/2", W/NYL PATCH	1.25
11	18079020	WASHER, 1/4", FLAT	0.20
12	1810102575NP	SCREW, 1/4-20X3/4", W/NYL PATCH	2.85
13	15CN-32683	CONN,BH,FEMALE,3W,240V	100.00
14	15CN-32681	CONN,BH,MALE,3W,240V	80.00
15	15CN-40910	CONN,BH,FEMALE,12V	50.00
16	15CN-20141122	QD DBL END 36" MALE & FEMALE, BLACK, LIGHT KIT	265.00
	90WSC	WATER SHIELD COVER ASSY (ITEMS 4, 6-8)	48.00
	90CWS10	COUNTER WEIGHT	72.00
9	90TP230306	TRANSFORMER PACK,230-12,3W (ITEMS 1-8 & 13-15)	1280.00
	90LCRP	LENS COVER RETAINING FASTENER KIT (16 FASTENER)	8.00
	90CLC-SET	LENS COVER SET, ONE EACH COLOR	42.00
	90CLC-AMP	LENS COVER, AMBER WITH RETAINING FASTENER	10.50
	90CLC-BLP	LENS COVER, BLUE WITH RETAINING FASTENER	10.50
	90CLC-GRP	LENS COVER, GREEN WITH RETAINING FASTENER	10.50
	90CLC-RDP	LENS COVER, RED WITH RETAINING FASTENER	10.50