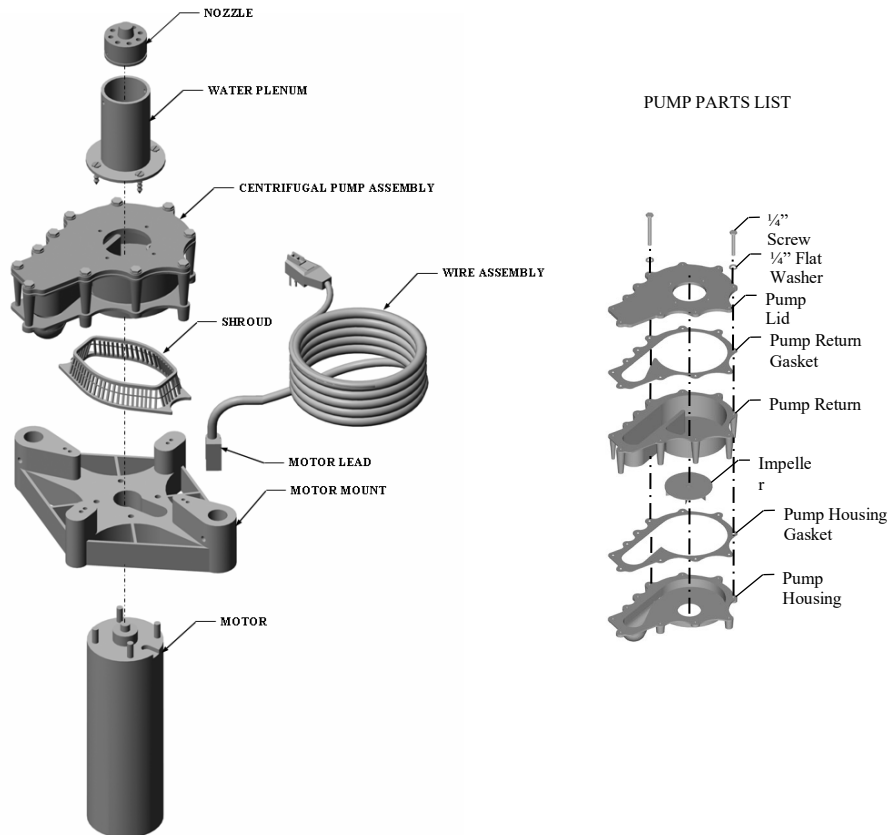




## LEGACY CENTRIFUGAL PUMP GASKET AND IMPELLER REPLACEMENT



### **!WARNING: RISK OF ELECTRIC SHOCK, DISCONNECT POWER PRIOR TO SERVICING**

STEP 1 Place the fountain upright with the motor resting on a stable surface. CAUTION: Do not allow the unit to fall over as damage may occur.

STEP 2 Remove the water plenum, nozzle assembly and gasket by removing the four 1/4-20 hex head cap screws from the flange of the water plenum.

STEP 3 Disassemble the pump assembly by removing the remaining seven 1/4-20 hex head cap screws and flat washers. Separate the pump components.

STEP 4 Clean all debris from the pump components and their surfaces. Fine sandpaper or abrasive pad will assist you.

STEP 5 Place the pump housing onto the fountain motor mount aligning the four mounting holes to the four mounting pads of the motor mount.

STEP 6 Install the pump housing gasket, aligning all eleven holes. The use of general purpose PVC/ABS cement will help to keep the gasket in place during assembly.

STEP 7 If the impeller is to be replaced, do so at this time or reinstall the original impeller. Place the impeller hub onto the motor shaft aligning the spline and push downward on the impeller until it contacts the pump housing. CAUTION: Do not over exert downward force as impeller hub damage may occur.

STEP 8 Set the pump return on top of the pump housing, aligning holes. Apply PVC/ABS cement to the pump return flange. Mount the pump return gasket on the pump return.

STEP 9 Install the pump lid aligning the holes. Install the four 1/4-20 x 3-3/4" hex head cap screws in the four holes aligned with the motor mount to attach the pump to the motor. Tighten to 50-55 in/lbs of torque.

STEP 10 Install the remaining seven 1/4-20 x 2-3/4" hex head cap screws and tighten to 50-55 in/lbs of torque.